

# The Collection #2



## DECOUPAGE SHEETS

### Teatime

By Astrid Schipper  
<http://astridschipper.blogspot.nl>



Cut a 14.8 x 14.8 cm single-fold card and two squares: gravel 14.3 x 14.3 cm and design paper 13.8 x 13.8 cm. Cut a 13.8 cm strip from the design paper with coffee beans. Stick the layers together and attach a satin ribbon with lace to the card.

Stamp a text and layer it onto azure blue card, trim leaving a narrow border. Cut the image out and make it 3D. Finish the card off with a ribbon, charm, branches and flowers.



Cut a 14.8 x 14.8 cm azure blue single-fold card and two squares: gravel 14.3 x 14.3 cm and design paper 13.8 x 13.8 cm. Cut a 13.8 x 9.5 cm strip from design paper with dots and cut the two edges with ribbons out in shape. Stick the layers together and decorate the edges with a piece of lace.

Stamp the text, layer it onto azure blue card and trim leaving a narrow border. Cut out the image and make it 3D. Cut out a few cupcakes and stick them to the card. Finish the card off with a ribbon and a charm, branches and flowers.



Cut a 29 x 14.8 cm azure blue strip and score lines at 1 cm, 13.5 cm, 15 cm and 16.5 cm. Cut four rectangles: gravel 12 x 14.3 cm (2x), blue design paper 11.5 x 13.8 cm and beige design paper 11.5 x 13.8 cm. Tear the beige sheet in half. Stick the layers to each side of the card. Cut a 6 cm deep oval into the top borders of the front and back of the card for the foil bag to stick through. Cut the oval from gravel card and cut away the centre. Lay this passe-partout onto the front of the card. Trace the aperture and cut it away. Layer a piece

of transparent sheet behind the aperture and mount the passe-partout onto the front. Wrap some coffee beans in foil, make a nice bag of it and place it in the card. Stick the card together at the top, at both sides of the foil bag. Stamp the text, stick it to azure blue card and trim leaving a narrow border. Cut out the image and make it 3D. Finish the card off with a ribbon and charm, branches and flowers.

## CRAFTABLES

### Tea & Coffee

By Wilga van 't Zelfde  
<http://mypaperpasion.blogspot.com>



Cut a 10 x 17 cm rectangle from turquoise card and design paper. Stick them together, cut the top corners at a slant and stitch a decorative border with the sewing machine. Cut a 7 x 13.5 cm rectangle from design paper. Stitch a decorative border and stick to the tag. Cut a scalloped border

from turquoise card and design paper. Stick to the tag together with the cake doily. Cut/emboss the cup, saucer and spoon. Ink the edges and mount them, raised with 3D-glue, onto the tag. Finish the card off with flowers, ribbon and rope, as per example.



Cut a 16.5 x 12.5 cm turquoise single-fold card, a 16 x 12 cm nut brown card and 15.5 x 11.5 cm design paper. Ink the edges and stick the layers together. Cut a 13.5 x 8 cm turquoise rectangle and a 13 x 7.5 cm one from design paper. Ink the edges and layer them onto the card. Cut/emboss four

cups and three saucers from design paper. Ink the edges and mount them onto the card raised with 3D-glue. Cut/emboss the spoons from a scrap of white card. Finish the card off with paper roses, a charm and paper tape.



Trace the pattern of the coffee cup onto a folded turquoise card with the fold on top. Stick design paper onto both sides. Cut the cup twice from turquoise card; stick design paper onto it. Make an incision into the saucers and attach them to

the cup. Stamp the text onto a scrap of white card and cut out. Fix the text with the branches, flowers and rope to the cup. Finish the card/cup off with pearl swirls and a pearl cord.



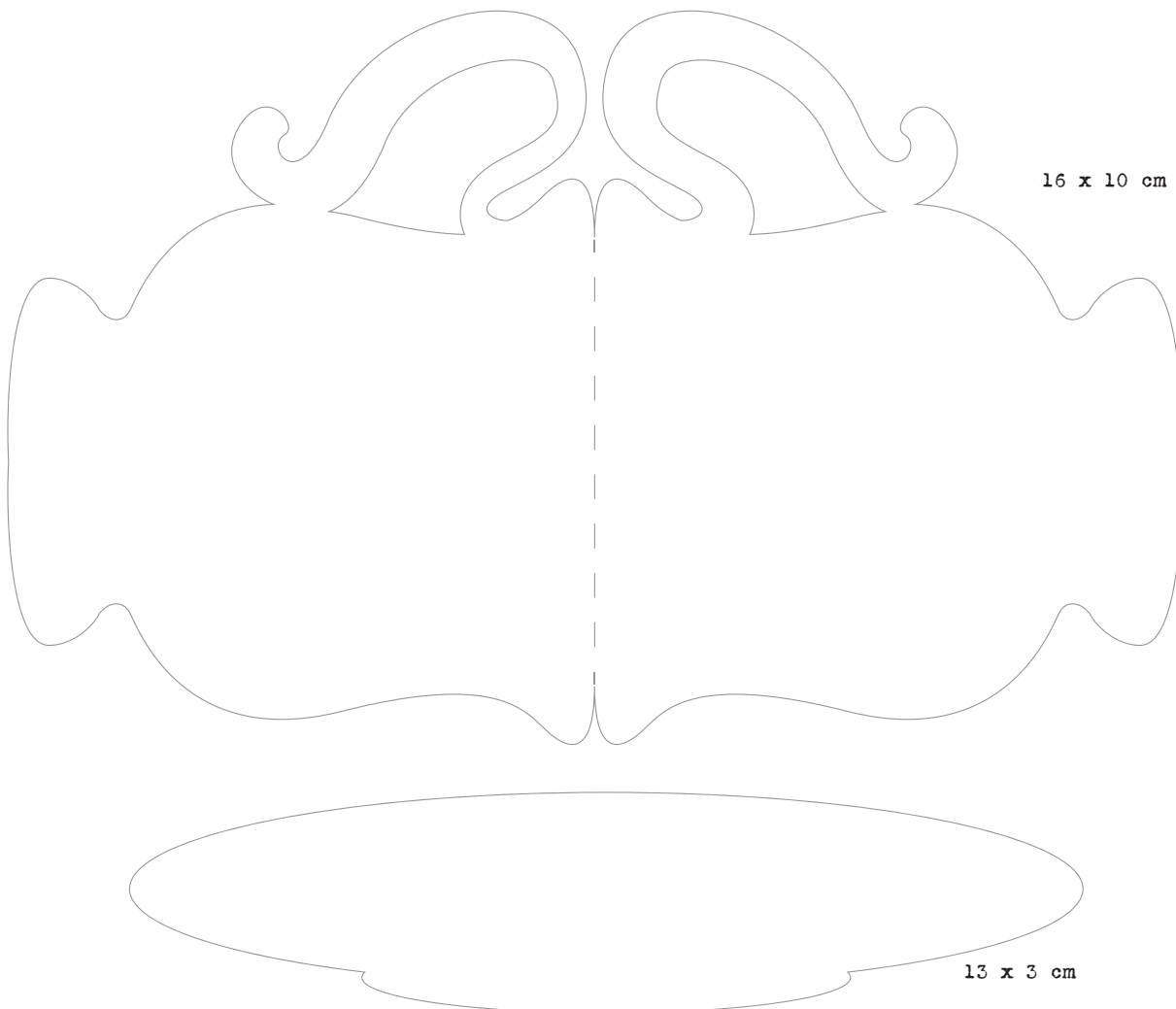
Cut a 10 x 28 cm strip from kraft card. Score at 11.5 cm in from the left-hand and right-hand side the piece in the centre is 5 cm. Use a punch to round off the corners. Cut turquoise card: 9.5 x 11 cm (2x) and 9.5 x 4.5 cm; use a punch to round off the corners. Use a sewing machine to stitch around the turquoise parts and stitch 2 cm wide strips of kraft card too. Stick the layers to the inside of the card. Fold the card and decorate the front with design paper. Cut a cup from design paper and turquoise card. Cut the spoon from design paper only. Make a small incision in the side of the cup to stick the spoon through. Chalk the roses of the cup. Cut an azure blue oval and stick it to the front of the card with a piece of paper tape on top. A small piece of azure blue card is stuck under the paper tape; stick the cups onto it so that a narrow azure blue border is visible. Decorate with paper flowers and die-cut leaves.

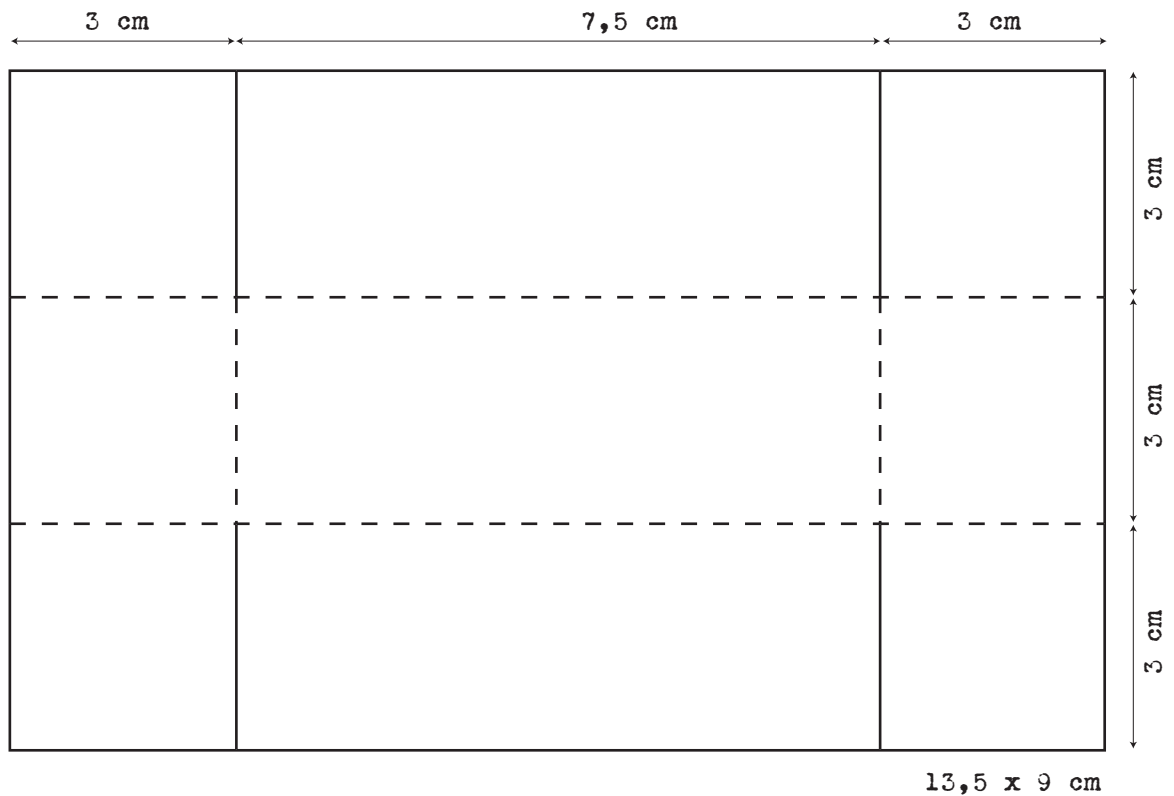
Finish off with bright blue strass stones.

Make the reverse side in the same way, but choose a stamped text instead.

How to make the box in the centre:

Cut a 9 x 13.5 cm strip of kraft card. Score at 3 cm in from all edges. Make incisions on the indicated lines. Fold the sides up and paste the box together. Stick the box in the centre of the card; add a tea bag, a sugar stick, a wooden spoon and some sweets. Finally punch holes in the card and tie a ribbon through them.





----- fold  
 \_\_\_\_\_ cut

## BEAUTIFUL Butterflies

By Elly van Trappen  
<http://myeverydaythings.blogspot.nl>



**MDF Heart**  
 Paint the wooden heart and decorate with various die-cut butterflies, flowers and leaves. Insert a piece of wire into the bodies of the butterflies



**Key ring**  
 Cut out the body twice and sew them together with a blanket stitch. Stitch the ribbon with the key ring between the two body parts. Stuff and finish stitching. Cut out the several parts and



**Romantic garland**  
 Cut the body ten times from two different colour combinations and sew them together with a blanket stitch. When you're half way stitching, insert a piece of wire in the shape of a butterfly and then continue stitching, now the wings can

to make the wings bendable. Decorate the flowers, leaves and parts of the butterfly with stitches.

decorate some of them with decorative stitches. Stick all layers to the body and decorate with self-adhesive flat-backed pearls.

be bent into shape. Decorate the various parts with stitches, glue them to the body. Finish off with small buttons and self-adhesive flat-backed pearls. Fix the butterfly to a length of lace. Make a suspension loop on both sides and tie miscellaneous ribbons and pieces of lace to it.

# Bird Houses

By Neline Plaisier

<http://neline-mycardcreations.blogspot.nl>



Cut a single-fold card (with the fold on top) and a single circle of 13 cm Ø from kraft card. Cut a 12.75 cm Ø purple circle and two semi-circles of 12.50 cm Ø. Stick the layers onto the card and cover the centre with a ribbon. Fix the rope with a stapler. Stamp the text onto kraft card, cut a label and tie it to the rope. Cut three branches, one birdhouse and a fence from kraft card, and two birds from

purple and blue card. Apply distress ink to the leaves of the branch. Use white ink to stamp the flowers onto the birdhouse. Colour them in with colouring pencils. Tie the house with a rope to the branch. Cut small flowers from design paper, stick leaves to the fence with the flowers on top. Apply glitter glue to the flowers. Stamp the post stamps and decorate the branches with paper flowers.



Cut a 14.75 x 14.75 cm single-fold kraft card. Cut a 14.75 x 14.75 pearly white square and a 14.5 x 14.5 cm purple one. Cut two 14.25 x 7.5 cm rectangles from design paper. Cut a strip from design paper; fix it with a stapler. Cut three branches from kraft card and three from grass green card. Stick the branches together. Cut four spiral shaped flowers from design paper, two birds from azure blue and purple card and the birdhouse from kraft card.

Use Versamark to stamp the birdhouse. Colour the roof and the corners of the house in with colouring pencils to create a shadow. Use Versamark to stamp the birds onto vellum and the butterfly onto kraft card and cut them out. Tie the birdhouse and a charm to the branch. Decorate the card with paper tape and post stamps. Finally stamp the text.



Cut a 12 x 16.25 cm single-fold kraft card. Cut an 11.5 x 16 cm white rectangle and an 11.25 x 15.75 cm purple one, and cut from design paper a rectangle of 11 x 15.5 cm and one of 6 x 10.75 cm. Layer a piece of bandage under the small rectangle. Cut two strips of design paper and fix them with a stapler. Use the Nestabilities die to cut a 7.5 cm Ø oval from purple card. Cut a 6.5 cm Ø circle from design paper. Cut the branches twice from kraft card and twice from grass green. Cut the leaves from the kraft card branches; stick the branches

together. Cut four spiral shaped flowers from design paper and a branch from grass green card. Cut the birdhouse twice from kraft card; stamp the house. Cut the edge of the roof of one of the birdhouses, colour it in with colouring pencils and attach it again with 3D-glue. Tie the birdhouse with rope to the branch. Cut a bird from purple card, stamp two butterflies onto kraft card and two onto vellum. Cut them out. Finish the card off with self-adhesive flat-backed pearls, a paper rose, paper tape and the post stamp.

# Creatables

By Jolanda Elderman

<http://jolandacreablog.blogspot.nl>



Cut a 15 x 15 cm single-fold carnation white card. To make clouds on the centre of the card: make a paper (cloud) template and dab distress ink onto the paper and over the edges. This might need some practicing on a scrap of paper first. Cut a 13.5 x 13.5 cm square from design paper and layer it onto a 14.5 x 14.5 cm purple square. Cut an 11.5 x 8.5 cm rectangle from the centre. Layer white card behind the aperture and use a ruler and craft

knife to cut a 0.5 cm smaller rectangle out on the front of the card, leaving a neat white border. Cut the grass and stick it to the card. Mount the passe-partout card onto the card with foam tape. Cut/emboss the Creatables, ink the embossed parts and layer them onto the card as shown. Use different thicknesses of foam tape for a nice 3D-effect. Finish the card off with small flowers and a text.



Cut a 15 x 15 cm pearly white single-fold card. To make clouds on the centre of the card: make a paper (cloud) template and dab distress ink onto the paper and over the edges. This might need some practicing on a scrap of paper first. Cut 13.5 x 13.5 cm design paper and layer it onto a 14.5 x 14.5 cm lilac square. Cut an oval shape from the centre. Layer white card behind the aperture

and cut the oval 0.5 cm smaller out on the front of the card leaving a neat white border. Cut the grass and stick it to the card with foam tape. Mount the passe-partout card onto the card with foam tape. Cut/emboss the Creatables, ink the embossed parts and stick them to the card. Finish the card off with flowers.



Cut a 15 x 15 cm pearly white single-fold card. To make clouds on the centre of the card: make a paper (cloud) template and dab distress ink onto the paper and over the edges. This might need some practicing on a scrap of paper first. Cut 13.5 x 13.5 cm design paper onto 14.5 x 14.5 cm cornflower blue square. Cut a 10 x 10 cm square from the centre. Layer white card behind the aperture and

use a ruler and craft knife to cut a 0.5 cm smaller rectangle from the card leaving a white border. Cut the grass and stick it to the card. Mount the passe-partout card onto the card with foam tape. Cut/emboss the Creatables, ink the embossed parts. Finish the card off with small flowers, a droplet of pearl, the small butterflies and a text.

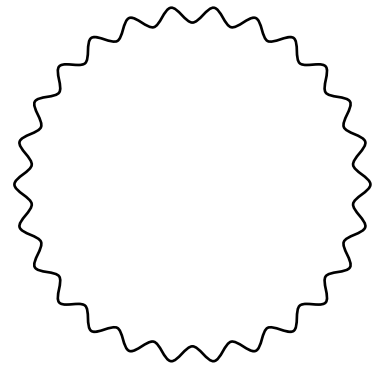
CLEARSTAMPS

## Coffee & Cupcakes

By Sigrid Klingenberg  
<http://sigridklingenberg.blogspot.nl>

### General

Use the paper distresser and a sepia ink pad to work the edges of the card and paper. Stamp the texts with a sepia ink pad.



Cut 11.5 x 13 cm striped design paper and layer onto 12 x 13.5 cm apricot-coloured scrap paper. Cut 11.5 x 9 cm blue striped design paper and layer onto 12 x 9.5 cm from apricot-coloured scrap paper. Stick it first onto 12.5 x 10 cm carnation white card and then stick it on three sides onto a larger white card, leaving the top open. Cut an 11.5 x 3 cm strip from the design paper with borders. Layer it onto 12 x 3.5 cm apricot-coloured scrap paper and then onto the card as per example. Stamp the cup and cupcake four times. Colour them all in.

Make the image 3D using 3D-kit. Layer it onto a 7 x 5.5 cm carnation white rectangle and then onto 7.5 x 6 cm apricot-coloured scrap paper. Attach all layers to the card as per example. Cut 8 x 11.5 cm design paper for the tag. Layer the bottom of the tag onto an 8 x 6.5 cm light blue dotted rectangle. Cut the top corners at a slant. Layer it onto an 8.5 x 12 cm apricot-coloured rectangle and cut these corners at a slant, too. Finish the card off with Creatables, rope, self-adhesive flat-back pearls and text stamps.



Cut a 13.5 x 13.5 cm square from blue striped design paper and layer onto a 14 x 14 cm blossom-coloured square. Stick it to the front of a 14.5 x 14.5 cm carnation white single-fold card. Cut 8 x 9.5 cm purple striped design paper and layer onto 8.5 x 10 cm blossom-coloured card. Cut 3 x 14 cm blue design paper. Cut a 14 x 1.5 cm strip from design paper. Stamp the vase with flowers and the cupcakes four times. Colour them in and made the image 3D using 3D-kit. Stick it to a 6 x

6 cm carnation white square and then to a 6.5 x 6.5 cm blossom-coloured square and finally onto the card. Finish the card off with Creatables, rope, self-adhesive flat-backed pearls and text stamps.